

**City of Portland**  
**Land Bank Commission Agenda**

*The Land Bank Commission is responsible for identifying and protecting open space resources with the city of Portland. The Commission seeks to preserve a balance between development and conservation of open space important for wildlife, ecological, environmental, scenic or outdoor recreational values.*



**Commission Members:**

Alaina Chormann, Daniel Herzlinger, Jon Kachmar, Michael Carey,  
Michael Scrameyer, Robert Foster, Simon Rucker.

City Staff: Ethan Hipple (Parks, Recreation, and Facilities Director), Doug Roncarati (Public Works-Stormwater Coordinator), Jessica Teesdale (PRF Sr. Executive Assistant)

**June 11, 2025**

**5:00 PM**

**On the second Wednesday of the month at 5:00 pm, the Portland Land Bank Commission will hold a meeting at Parks, Recreation, and Facilities, 212 Canco Rd. Suite A conference room.**

**The June 2025 meeting will be the annual field trip meeting.**

I. Agenda Items

i. Field Trip itinerary

- 5 pm Departure from Parks, Recreation, and Facilities headquarters, 212 Canco Road, Portland, Maine 04103
- 5:15 pm arrive Hope Avenue
- 5:45 pm depart Hope Avenue
- 6 pm arrive at North Deering Park
- 6:30 pm depart North Deering Park
- 6:45 arrive at Stroudwater Park
- 6:50 depart Stroudwater Park
- 7 pm arrive at 212 Canco Rd.

ii. Communications and Updates

a. Stroudwater Park gasoline relocation

II. Adjournment

# Hope Avenue Parcels

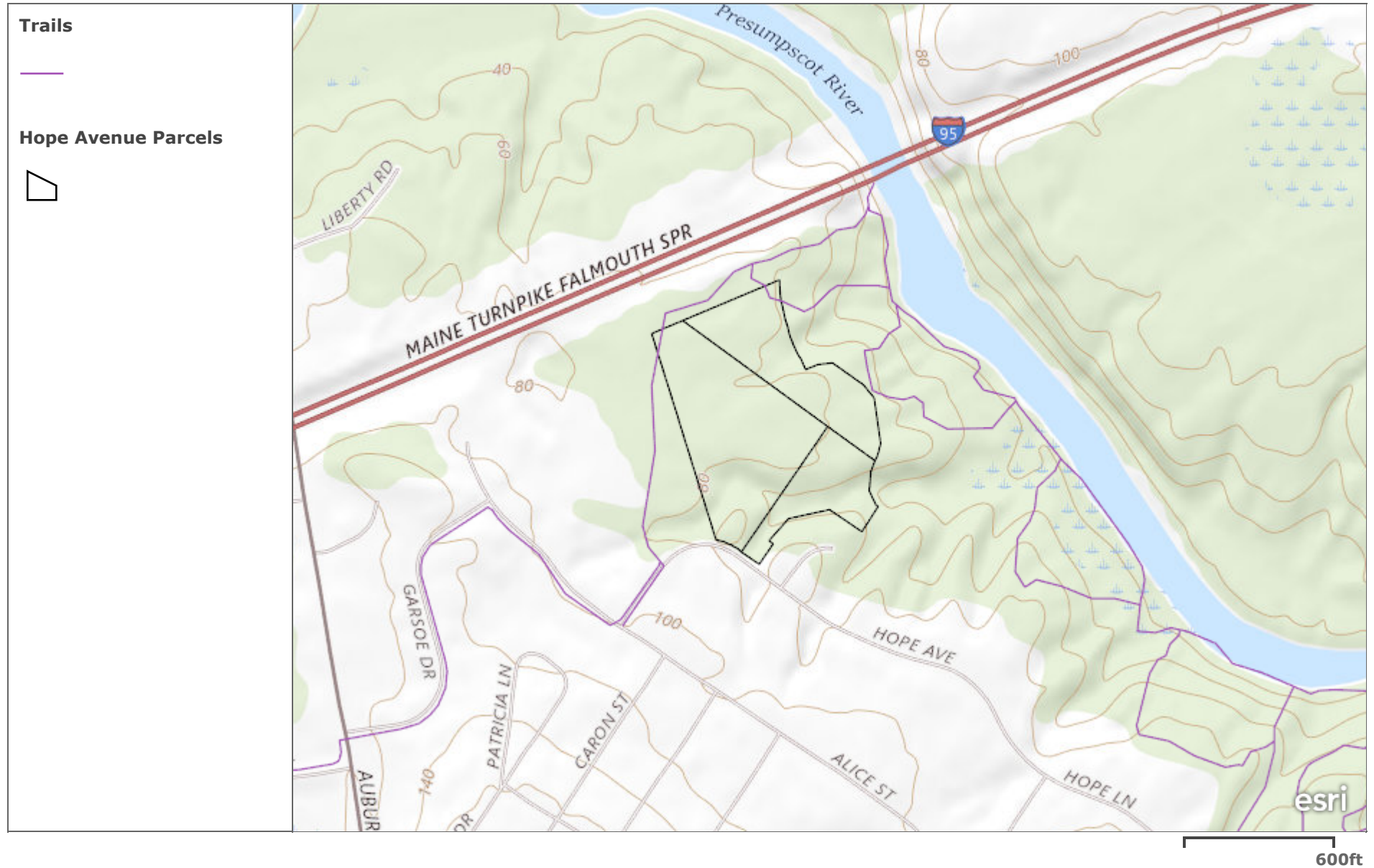
Hope Avenue Parcels



300ft

Maine GeoLibrary | Maxar | Esri, HERE, Garmin, iPC

# Hope Avenue Parcels



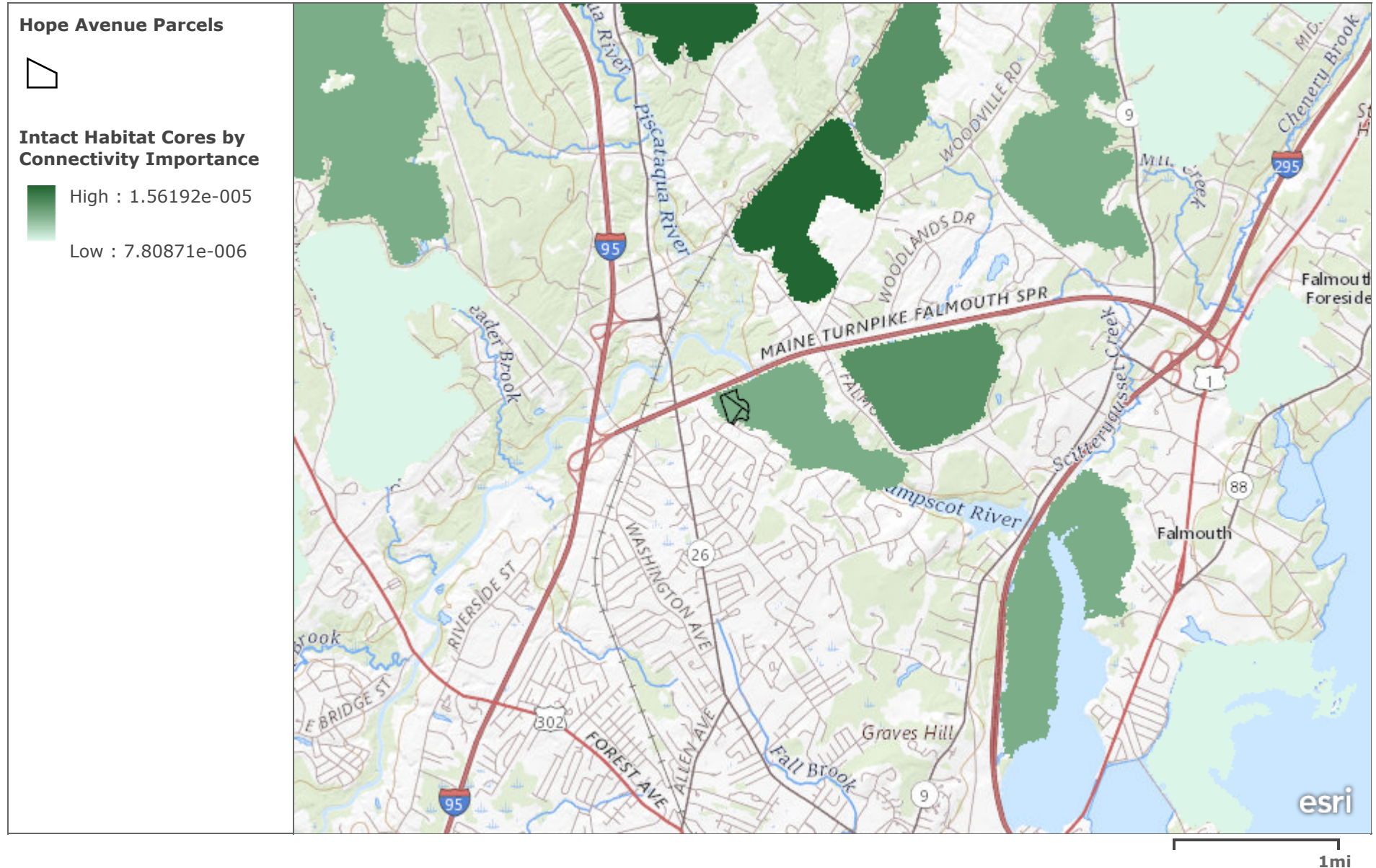
Maine GeoLibrary | USGS The National Map: National Boundaries Dataset, 3DEP Elevation Program, Geographic Names Information System, National Hydrography Dataset, National Land Cover Database, National Structures Dataset, and National Transportation Dataset; USGS Global Ecosystems; U.S. Census Bureau TIGER/Line data; USFS Road Data; Natural Earth Data; U.S. Department of State Humanitarian Information Unit; and NOAA National Centers for Environmental Information, U.S. Coastal Relief Model. Data refreshed May, 2020.

# Hope Avenue Parcels



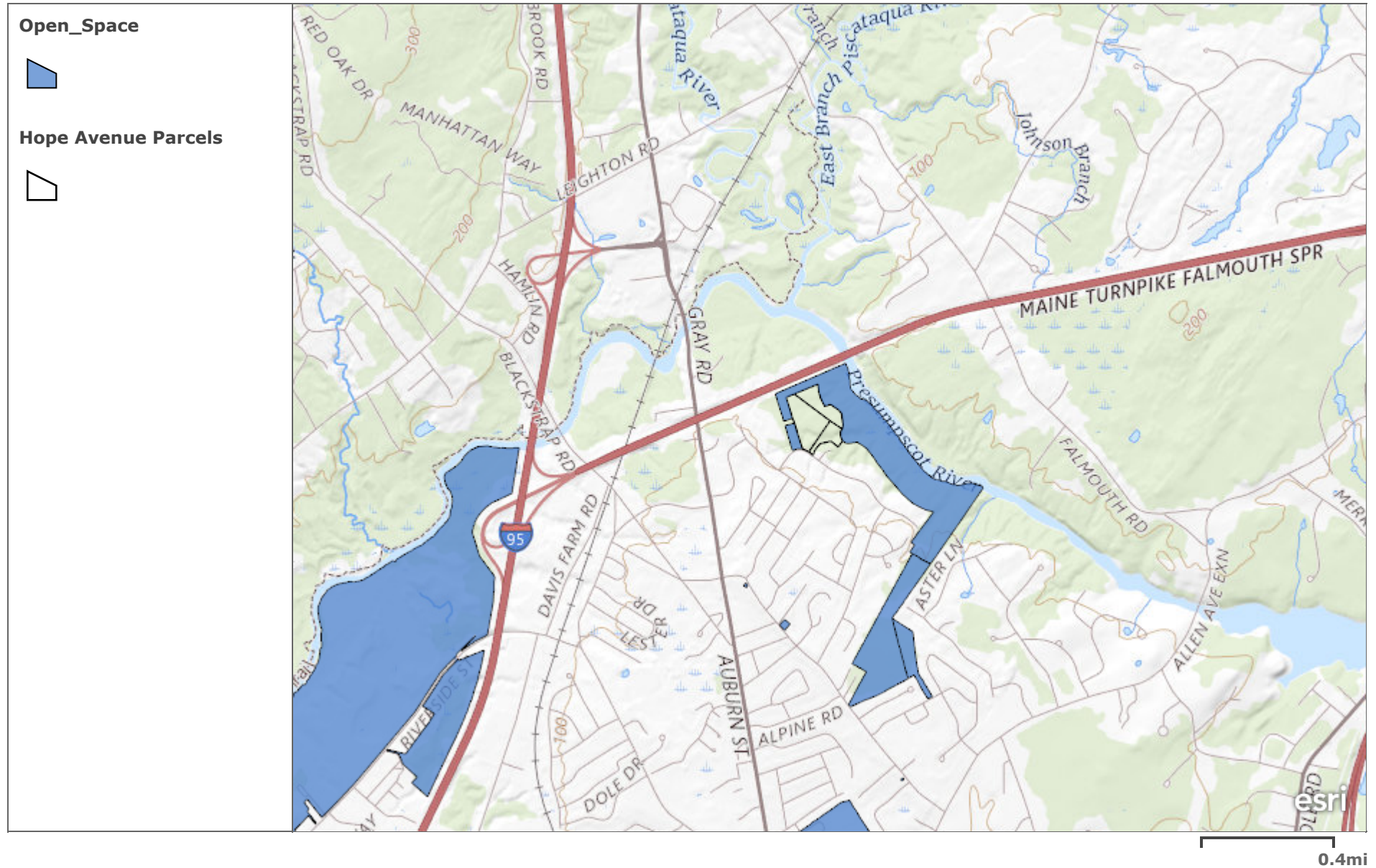
Maine GeoLibrary | USGS The National Map: National Boundaries Dataset, 3DEP Elevation Program, Geographic Names Information System, National Hydrography Dataset, National Land Cover Database, National Structures Dataset, and National Transportation Dataset; USGS Global Ecosystems; U.S. Census Bureau TIGER/Line data; USFS Road Data; Natural Earth Data; U.S. Department of State Humanitarian Information Unit; and NOAA National Centers for Environmental Information, U.S. Coastal Relief Model. Data refreshed May, 2020.

# Hope Avenue Parcels



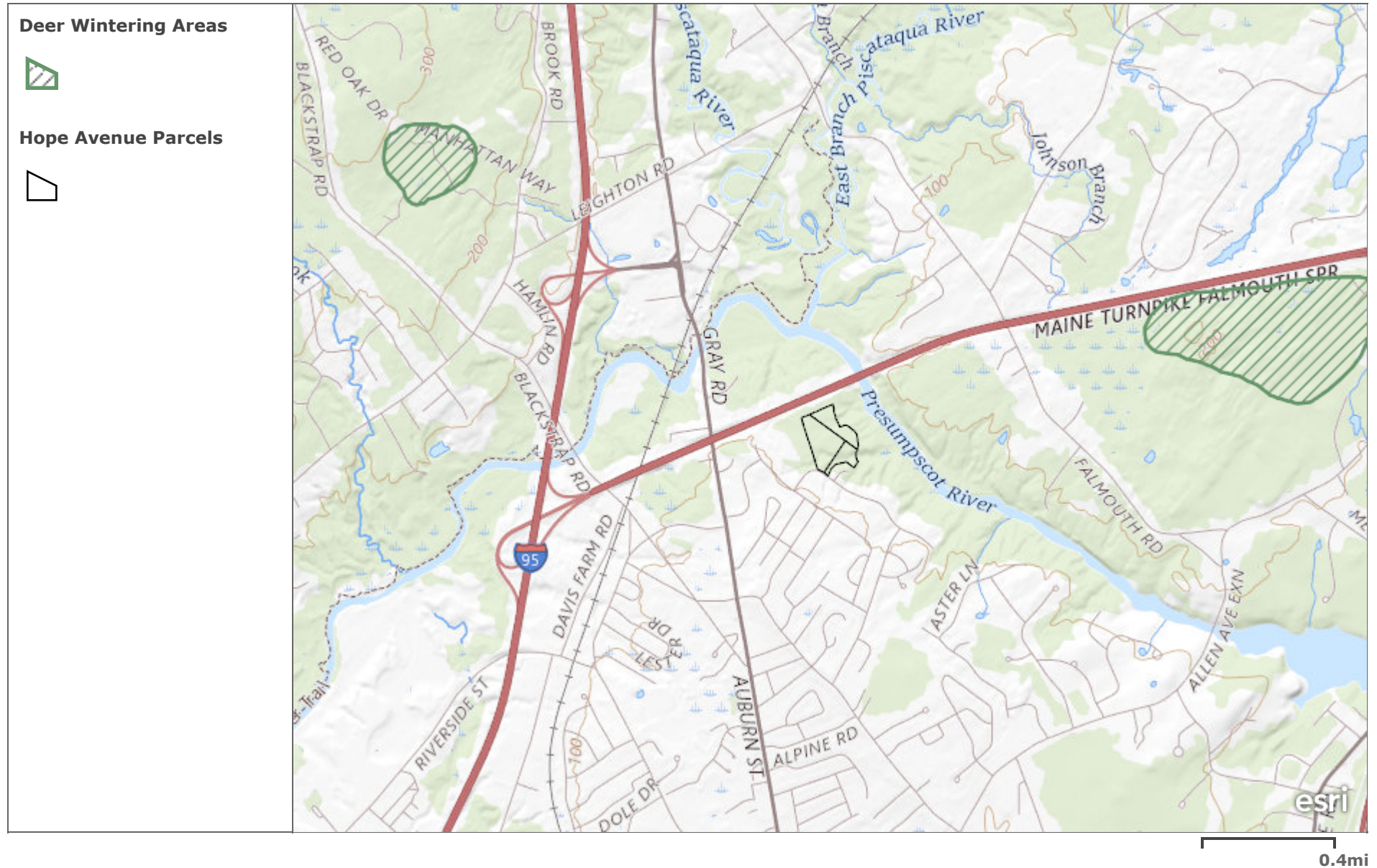
Maine GeoLibrary | USGS The National Map: National Boundaries Dataset, 3DEP Elevation Program, Geographic Names Information System, National Hydrography Dataset, National Land Cover Database, National Structures Dataset, and National Transportation Dataset; USGS Global Ecosystems; U.S. Census Bureau TIGER/Line data; USFS Road Data; Natural Earth Data; U.S. Department of State Humanitarian Information Unit; and NOAA National Centers for Environmental Information, U.S. Coastal Relief Model. Data refreshed May, 2020. | Esri, APL, NetworkX, Betweenness Centrality, BC

## Hope Avenue Parcels



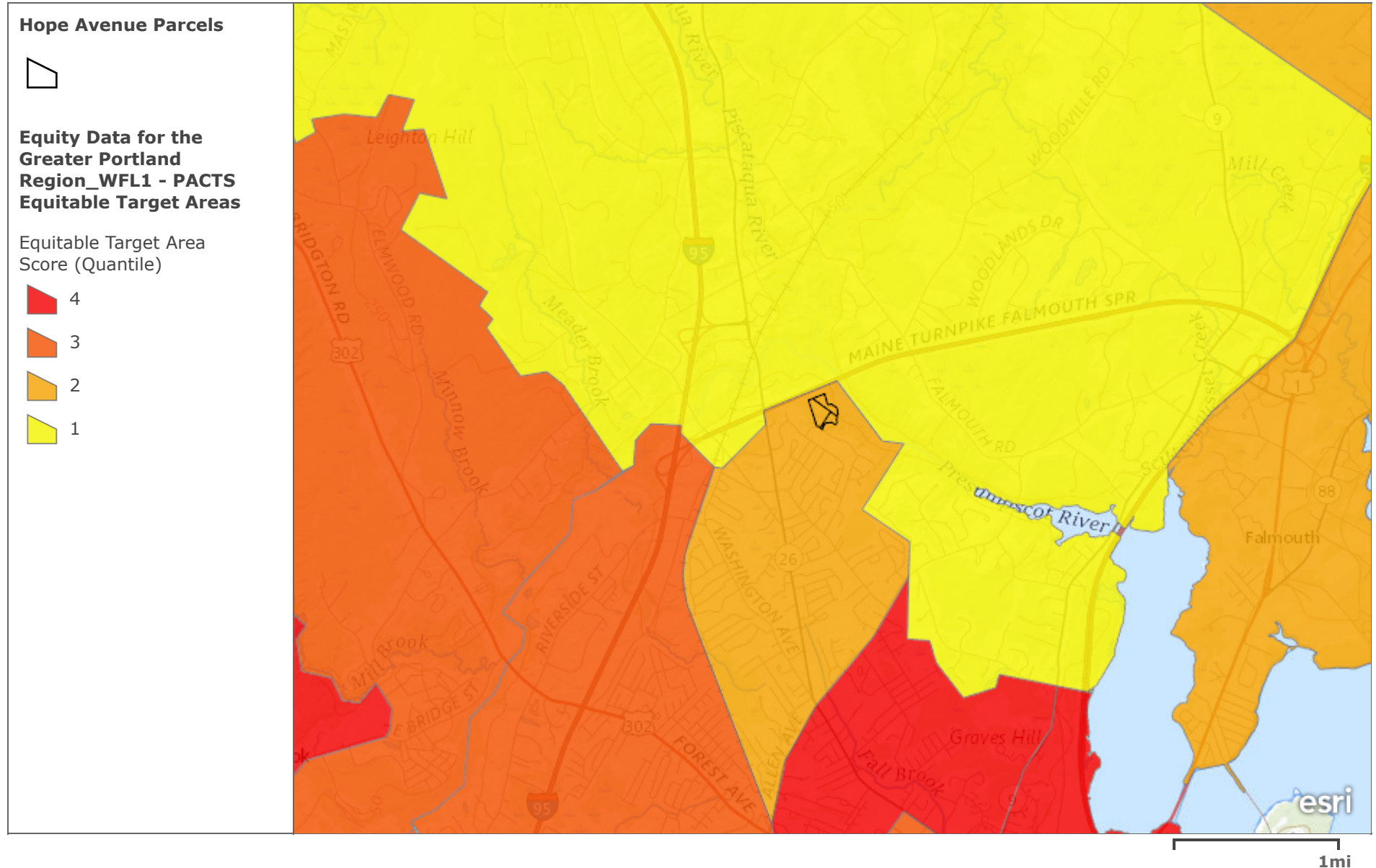
Maine GeoLibrary | USGS The National Map: National Boundaries Dataset, 3DEP Elevation Program, Geographic Names Information System, National Hydrography Dataset, National Land Cover Database, National Structures Dataset, and National Transportation Dataset; USGS Global Ecosystems; U.S. Census Bureau TIGER/Line data; USFS Road Data; Natural Earth Data; U.S. Department of State Humanitarian Information Unit; and NOAA National Centers for Environmental Information, U.S. Coastal Relief Model. Data refreshed May, 2020.

# Hope Avenue Parcels



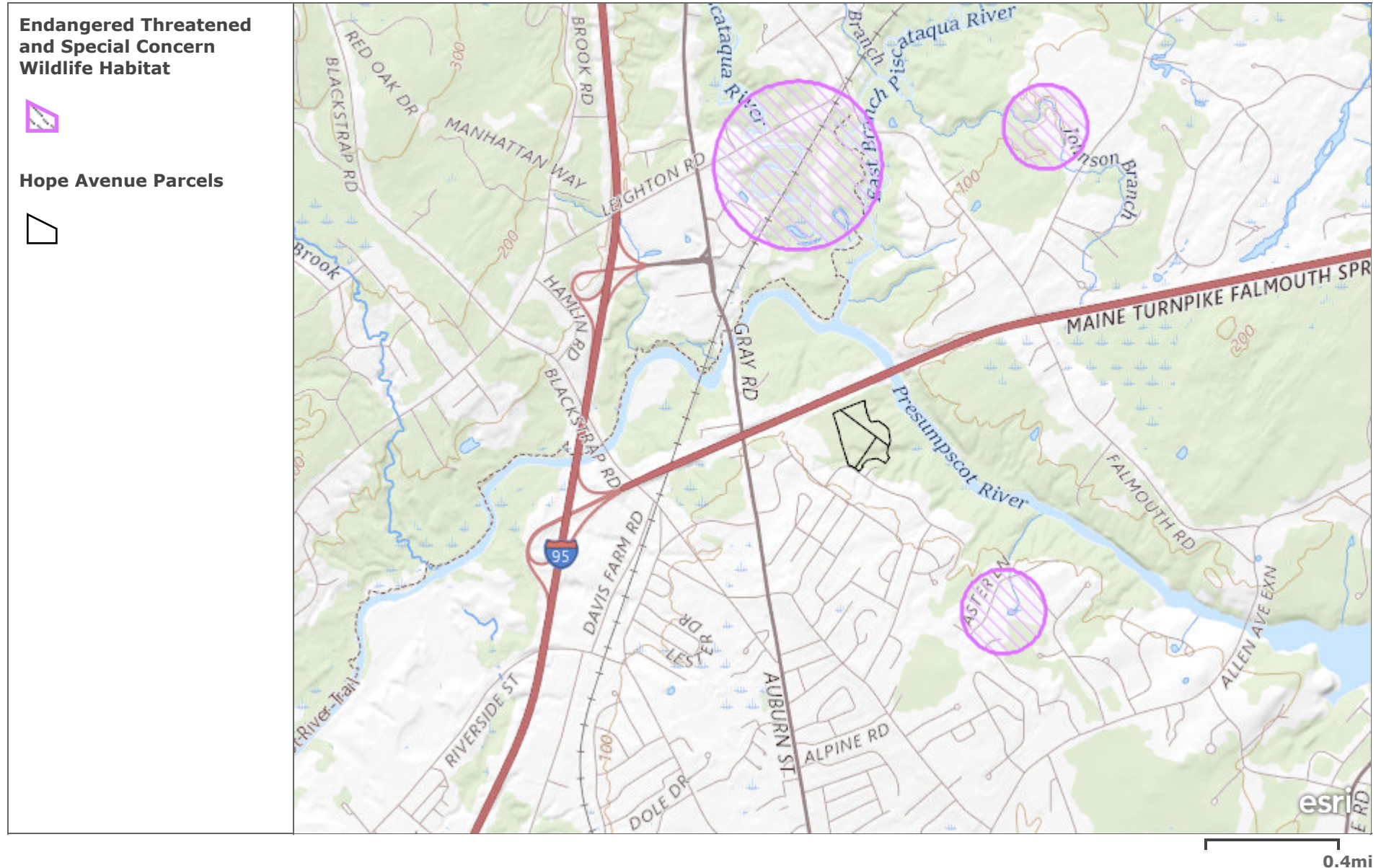
Maine GeoLibrary | USGS The National Map: National Boundaries Dataset, 3DEP Elevation Program, Geographic Names Information System, National Hydrography Dataset, National Land Cover Database, National Structures Dataset, and National Transportation Dataset; USGS Global Ecosystems; U.S. Census Bureau TIGER/Line data; USFS Road Data; Natural Earth Data; U.S. Department of State Humanitarian Information Unit; and NOAA National Centers for Environmental Information, U.S. Coastal Relief Model. Data refreshed May, 2020. | Maine Inland Fisheries and Wildlife

# Hope Avenue Parcels



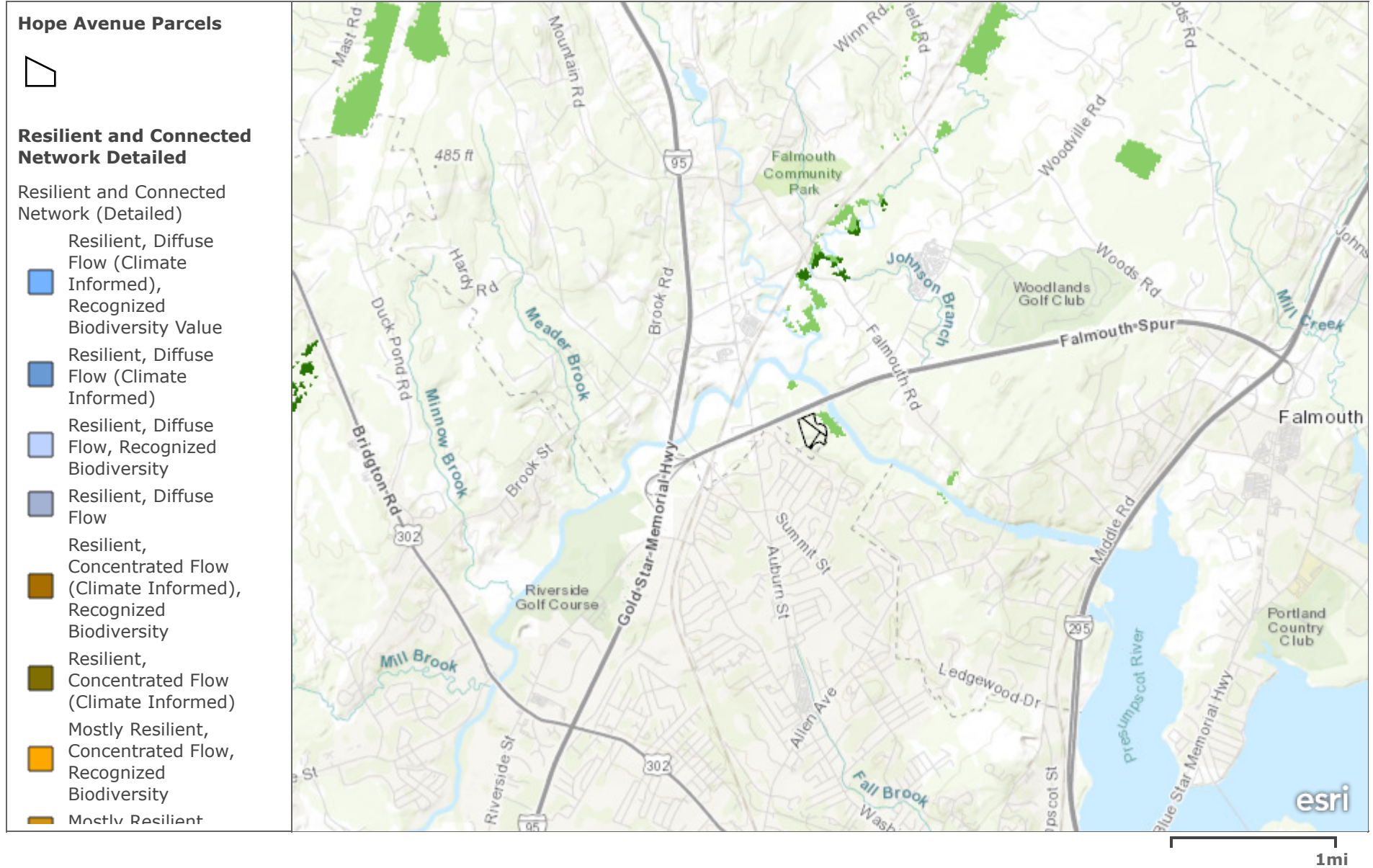
Maine GeoLibrary | USGS The National Map: National Boundaries Dataset, 3DEP Elevation Program, Geographic Names Information System, National Hydrography Dataset, National Land Cover Database, National Structures Dataset, and National Transportation Dataset; USGS Global Ecosystems; U.S. Census Bureau TIGER/Line data; USFS Road Data; Natural Earth Data; U.S. Department of State Humanitarian Information Unit; and NOAA National Centers for Environmental Information, U.S. Coastal Relief Model. Data refreshed May, 2020.

# Hope Avenue Parcels



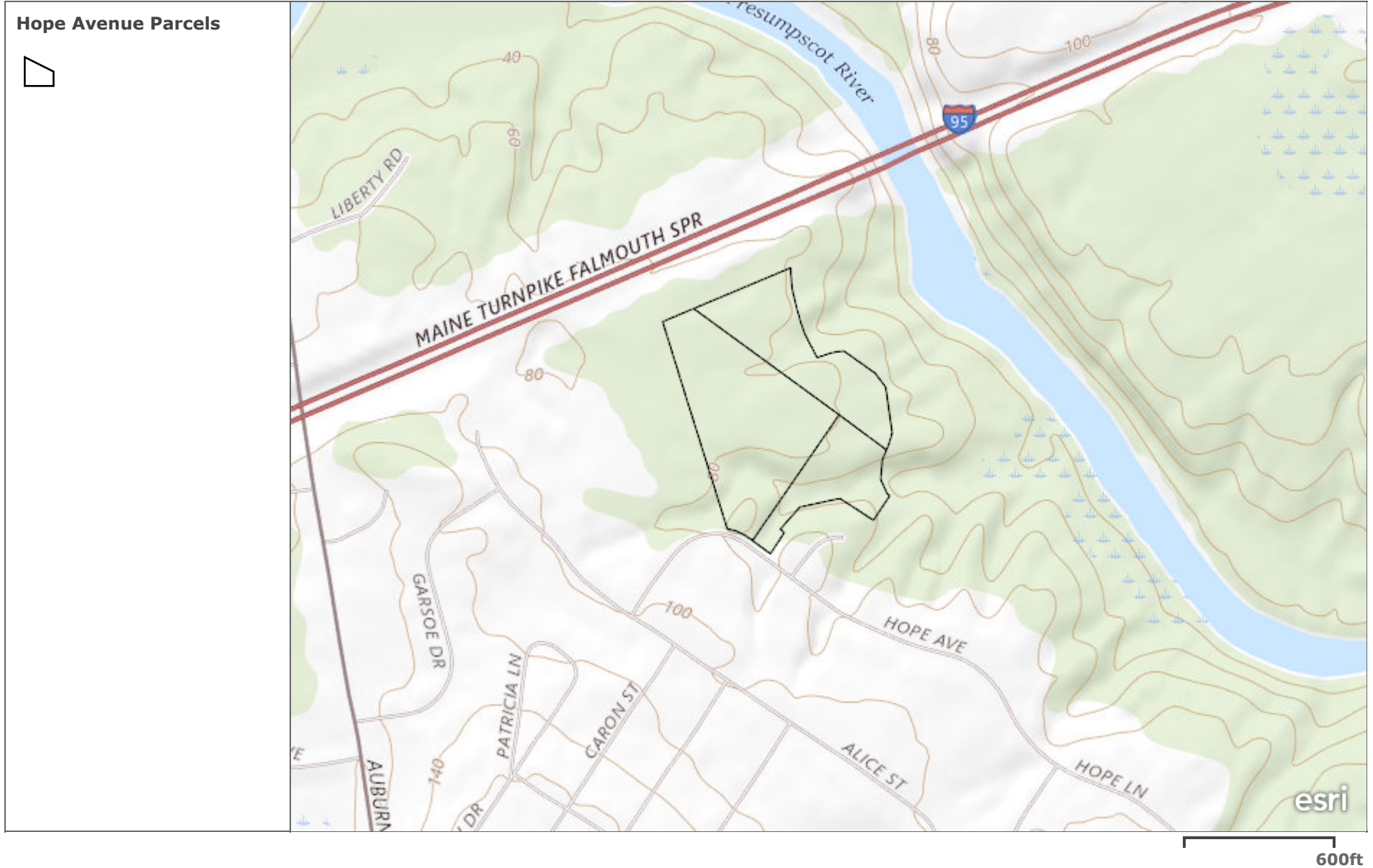
Maine GeoLibrary | USGS The National Map: National Boundaries Dataset, 3DEP Elevation Program, Geographic Names Information System, National Hydrography Dataset, National Land Cover Database, National Structures Dataset, and National Transportation Dataset; USGS Global Ecosystems; U.S. Census Bureau TIGER/Line data; USFS Road Data; Natural Earth Data; U.S. Department of State Humanitarian Information Unit; and NOAA National Centers for Environmental Information, U.S. Coastal Relief Model. Data refreshed May, 2020. | Maine Inland Fisheries and Wildlife

# Hope Avenue Parcels

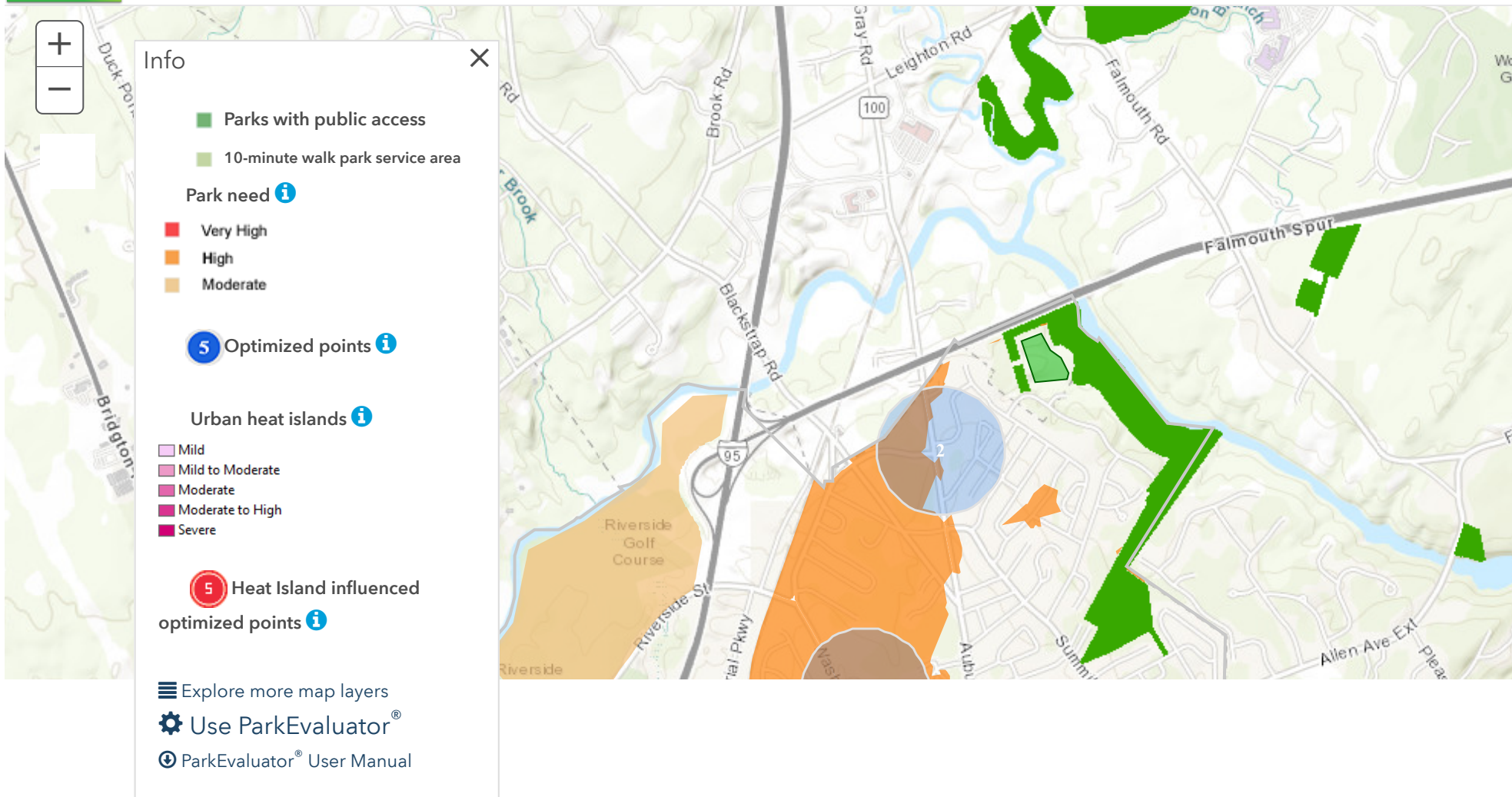


Esri Canada, Esri, HERE, Garmin, INCREMENT P, USGS, METI/NASA, NGA, EPA, USDA | Maine GeoLibrary | The Nature Conservancy

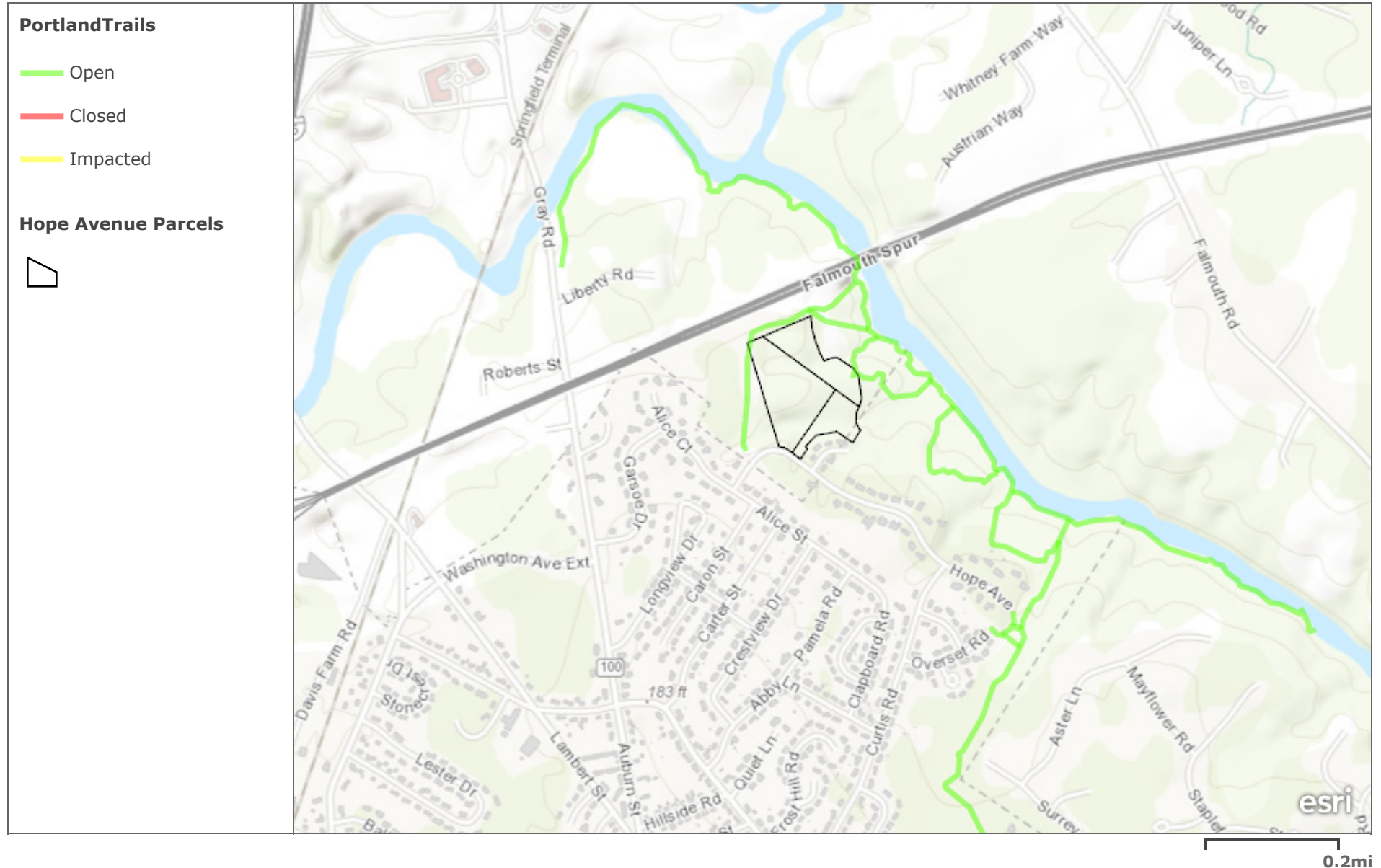
# Hope Avenue Parcels



Maine GeoLibrary | USGS The National Map: National Boundaries Dataset, 3DEP Elevation Program, Geographic Names Information System, National Hydrography Dataset, National Land Cover Database, National Structures Dataset, and National Transportation Dataset; USGS Global Ecosystems; U.S. Census Bureau TIGER/Line data; USFS Road Data; Natural Earth Data; U.S. Department of State Humanitarian Information Unit; and NOAA National Centers for Environmental Information, U.S. Coastal Relief Model. Data refreshed May, 2020.

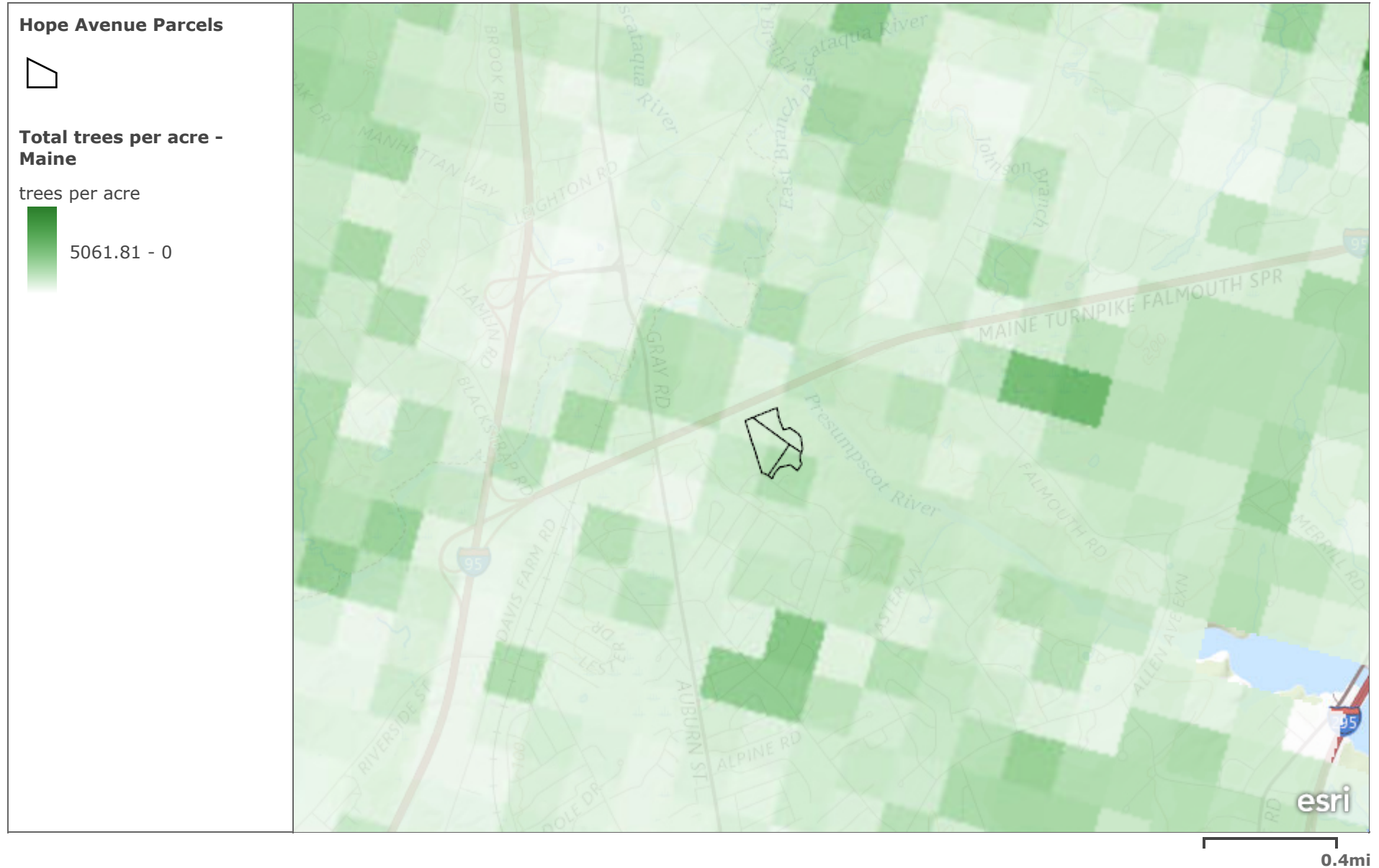


# Hope Avenue Parcels



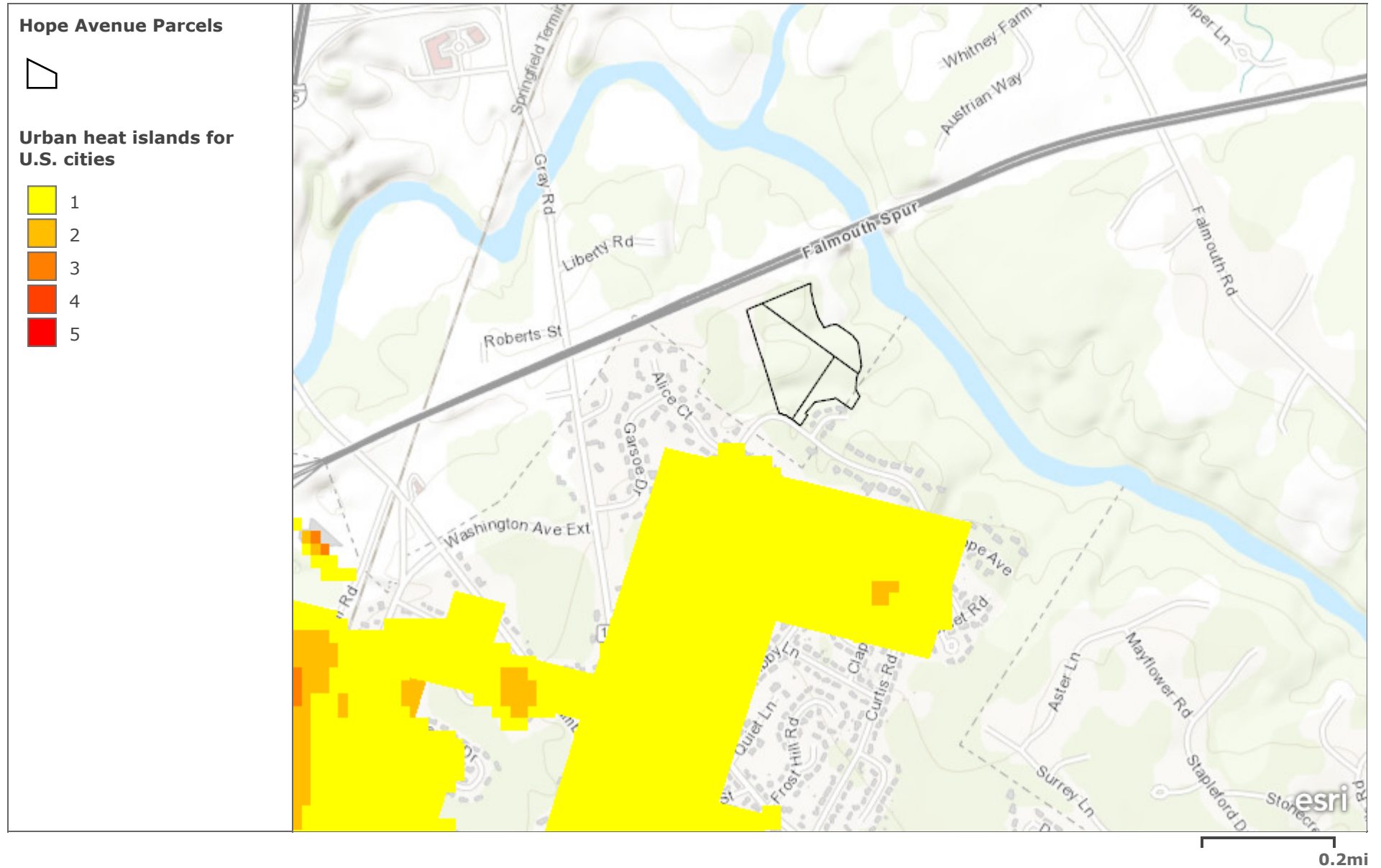
Esri Canada, Esri, HERE, Garmin, INCREMENT P, USGS, METI/NASA, EPA, USDA | Maine GeoLibrary

# Hope Avenue Parcels



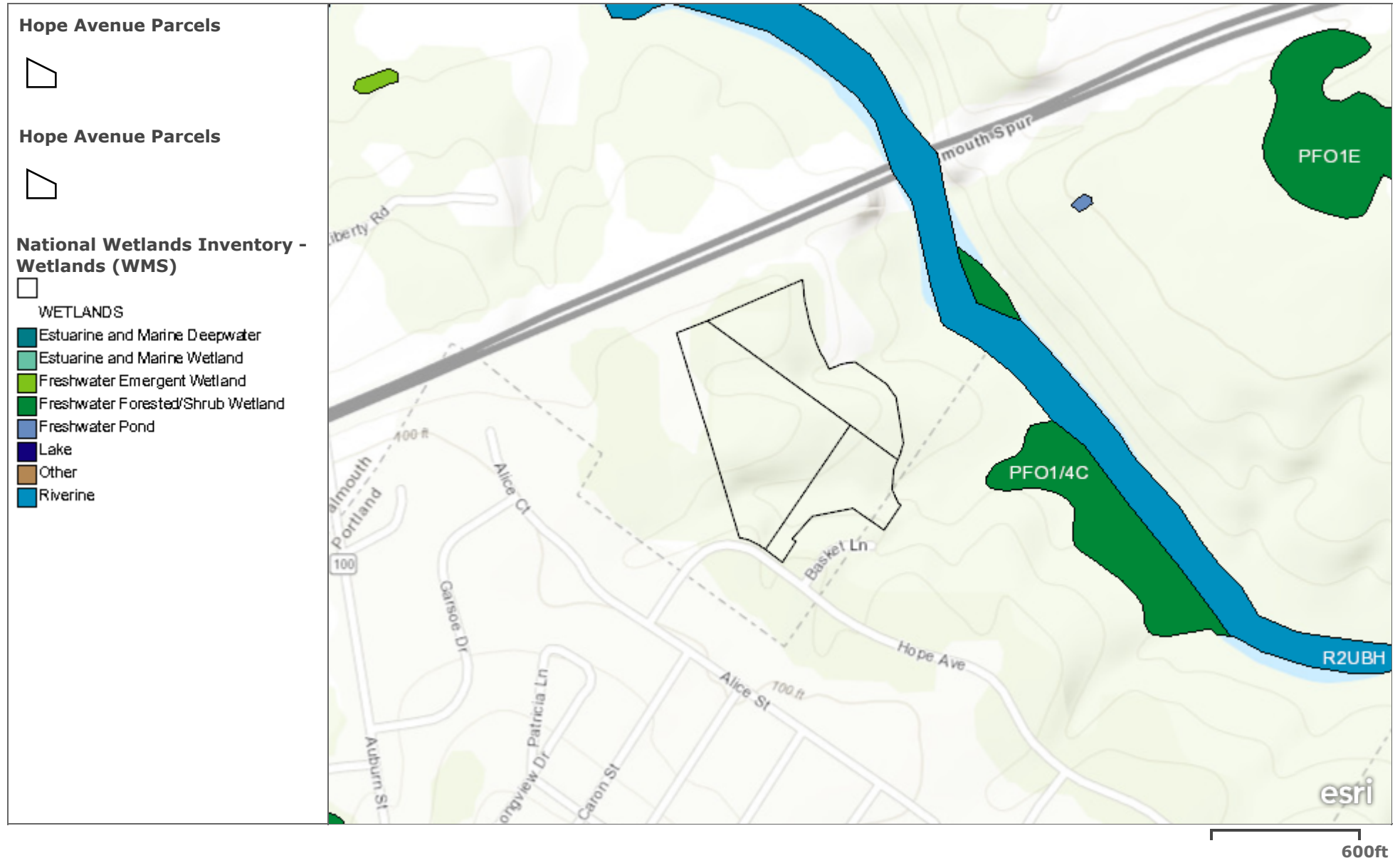
Maine GeoLibrary | USGS The National Map: National Boundaries Dataset, 3DEP Elevation Program, Geographic Names Information System, National Hydrography Dataset, National Land Cover Database, National Structures Dataset, and National Transportation Dataset; USGS Global Ecosystems; U.S. Census Bureau TIGER/Line data; USFS Road Data; Natural Earth Data; U.S. Department of State Humanitarian Information Unit; and NOAA National Centers for Environmental Information, U.S. Coastal Relief Model. Data refreshed May, 2020. | Maps were produced by Ty Wilson and Doug Griffith (barrywilson@fs.fed.us, dgriffith@fs.fed.us)

# Hope Avenue Parcels

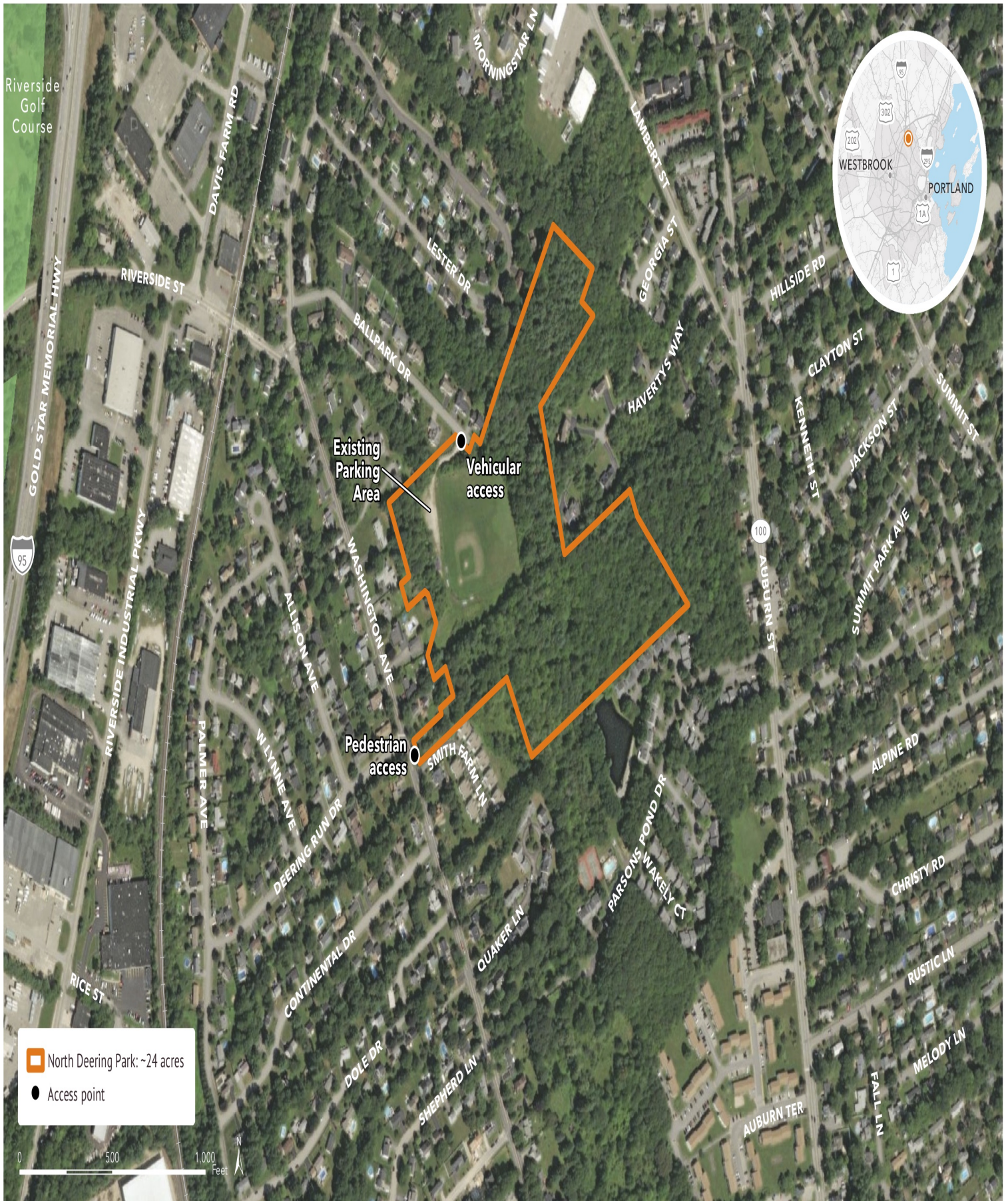


Esri Canada, Esri, HERE, Garmin, INCREMENT P, USGS, METI/NASA, EPA, USDA | Maine GeoLibrary | The Trust for Public Land, Descartes Labs, USGS

# Hope Avenue Parcels



Esri Canada, Esri, HERE, Garmin, INCREMENT P, Intermap, USGS, METI/NASA, EPA, USDA | Maine GeoLibrary



# Aerial Photo

## NORTH DEERING PARK, PORTLAND, MAINE

March 24, 2022. Copyright © Trust for Public Land. Trust for Public Land and Trust for Public Land logo are federally registered marks of Trust for Public Land. Information on this map is provided for purposes of discussion and visualization only. [www.tpl.org](http://www.tpl.org)





**WALDO STREET HAND CARRY BOAT LAUNCH LAYOUT**



OPTION #1: 4 FT WIDE ACCESS WAY FROM ACCESS ROAD TO BOAT LAUNCH SURFACE TO BE ECORASTER E40 - STONE FILLED APPROX. SURFACE AREA = 980 SF ASSUME 6 INCH STONE BASE

OPTION #2: 4 FT WIDE ACCESS WAY FROM FORE RIVER TRAIL TO BOAT LAUNCH SURFACE TO BE ECORASTER E40 - STONE FILLED APPROX. SURFACE AREA = 661 SF ASSUME 6 INCH STONE BASE

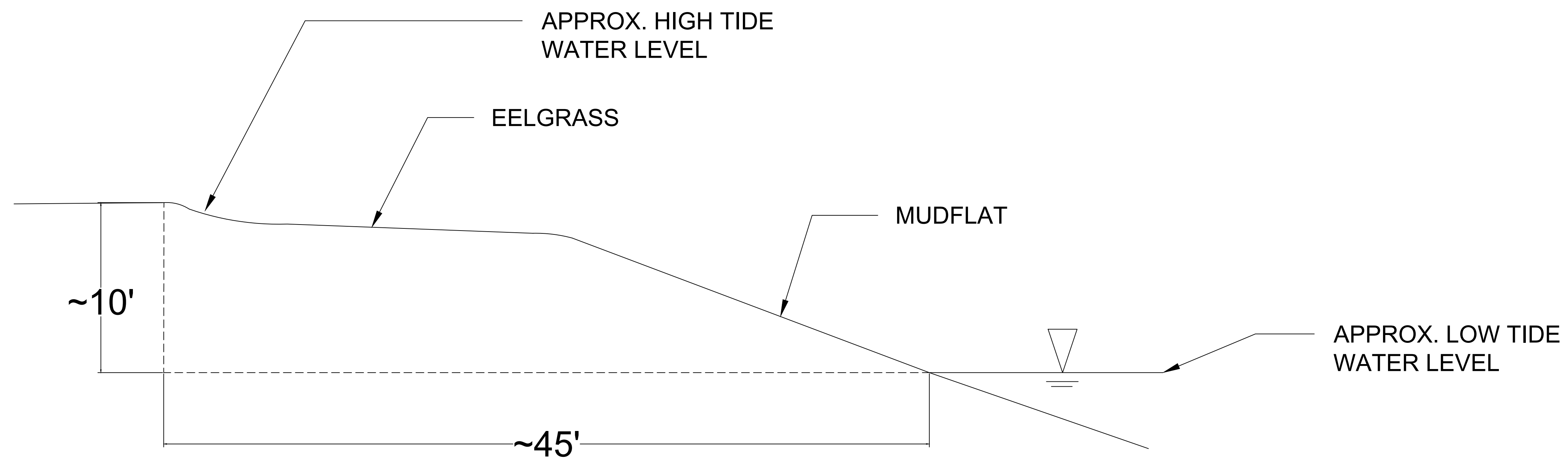
BOAT LAY DOWN AREA W/ BOAT STORAGE RACK

SHORELINE STABILIZATION (AS NEEDED)

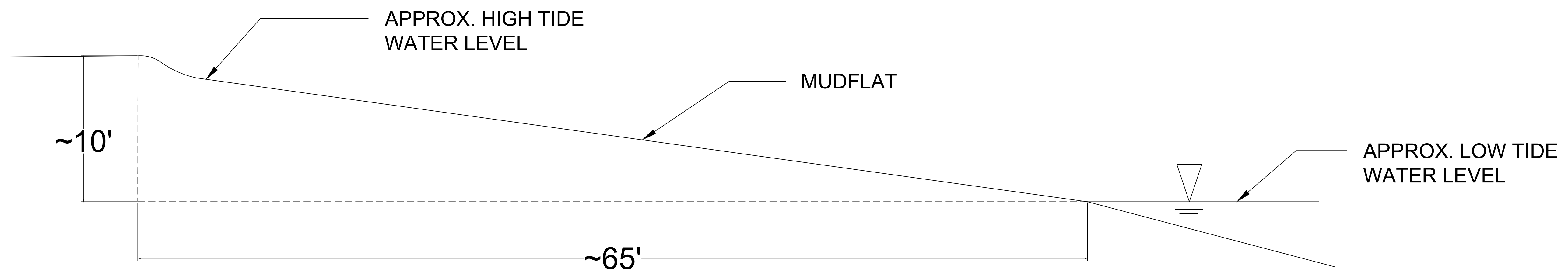
PROPOSED DOCK W/ CANOE/KAYAK LAUNCH

# Fore River trail

## HOBART STREET HAND CARRY BOAT LAUNCH LAYOUT



**WALDO STREET PROFILE**



**HOBART STREET PROFILE**

NOTE: PROJECT TEAM TO REVIEW, APPROVE AND ENDORSE FINAL SITE SPECIFIC DESIGN.

From: **Rodney Jr, Mike** <[rodneym@unitil.com](mailto:rodneym@unitil.com)>  
Date: Thu, Jun 5, 2025 at 9:08 AM  
Subject: stroudwater park  
To: Alex Marshall <[amarshall@portlandmaine.gov](mailto:amarshall@portlandmaine.gov)>, Ethan Hipple  
<[EHIPPLE@portlandmaine.gov](mailto:EHIPPLE@portlandmaine.gov)>

Hello all, I was talking with rob with historic and he let me know you were looking for some info. Here are a couple images of where we are working. We are digging a trench ( where the White line is and digging in the circle) to replace and re route the gas line. The existing line in the park that runs adjacent to the new line ( in white) will be retired . the trenching should be about 42” deep. The reason for the re route is to stay away from the rock wall. Let me know if you need anything else. Thanks

**Mike Rodney Jr,**

*Project Leader*

[376 Riverside Industrial Pkwy](#)

[Portland ME 04103](#)

**T** 207-632-3132

[www.unitil.com](http://www.unitil.com)



